

**Welcome to the
2018-2019
PTA General Meeting**



PTA's Mission

Make every child's potential
a reality by engaging and
empowering families and
communities to advocate
for all children.

What is the PTA?

We promise, it isn't about meetings

Then what's the PTA about, you might ask?

Events

- Lots of events, and clubs and a garden, etc.

Volunteering

- Serve on a committee, pop into a classroom.
- Look for SignUp Geniuses

Fundraising

- Auctions, 5Ks, and Trash Bags, and Book Fairs, etc.

A fantastic community...and the super cute kids

- They are all adorable. It's all about the kids, right?

If you DO like meetings, we would love you to chair a committee or join the executive board!

- Open positions: Poinsettia Sale Chair, PTA Reflections Chair/Committee Members, Movie Night Chair, PTA DJ/AV
- Executive board will be slated in Dec/Jan
- Let us know if you are interested



What is the PTA Executive Board?

Taking a position on the EXEC board is one of the best ways to impact Prairie's programs.

- There are 16 positions on the board. They are slated in January for the upcoming school year and are voted on at our 3rd Qtr General Membership meeting.
- Not every position will be up for re-election each year depending on whether the current board member is returning. The term limit for each board position is two years.
- The EXEC board meets at Prairie once a month to discuss business and vote on current measures. Mrs. Jones and a Prairie teacher attend these board meetings to serve as the voices of the teachers and staff.

PTA Co-Presidents: Jessica Brown and Tricia Stephens

VP Co-Presidents Elect: Libby Pfeiffer and Sarah Walsh

VP Programs: Gayle Boyd

VP Membership: Jennifer Wilson

VP Fundraising: Kristen Fine

VP Student Activities: Sarah Todd

VP Communications: Maddie Kamphaus

VP Community Building & Outreach: Nicole McCoy

Recording Secretary,: Sara Dippel

Corresponding Secretary: Jennifer Wonderly

Treasurer: Kelly Henderson

Prairie Experience Chair: Sally Cook

Member-at-Large K-3: Sarah Keller

Member-at-Large 4-6: Holly Grummert

Prairie Fund Liaison: Sarah Walsh and Libby Pfeiffer

Teacher Liaison: Hasina Thomas

Meet the VP's on the PTA Board!

VP Programs – Gayle Boyd

Committees/Events that fall under VP Programs...



- Art Committee – Carol Solenberger
- Health & Wellness – Laura Moffett
- Chat-n-Chew – Stacey Winfield
- Red Ribbon Week – Sam Lind
- Library Coordinator – Kelly Morgester
- One Book One School – Kristen Fine

Meet the VP's on the PTA Board!

VP Membership – Jennifer Wilson



Committees/Events that fall under VP Membership...

- **Bakers/Hospitality – Kelly Askew**
- **Buddy Program – Lindsay Henley**
- **My School Anywhere – John Kamphaus**
- **Kindergarten Roundup – Erin Gustafson**
- **Preschool Event Coordinator – Amy Moore**
- **Special Guest Day – Laura Kelly**
- **Staff Meals – Michelle Rodriguez**
- **Teacher Appreciation Week – Betsy Ordonez**
- **Watch DOGS – Dan Moon**

Meet the VP's on the PTA Board!

VP Fundraising – Kristen Fine



*Committees/Events that fall under
VP Fundraising...*

- Book Fair – Amy Moore and John Kamphaus
- Box Tops – Kelly Askew
- Prairie 5K – Molly Hunter, Mark Hunter, Joy Maxwell
- School Supply Sale – Julie Meyer
- Spirit Dining Nights – Jessica Perbeck
- Spirit Wear – Joy Maxwell
- Scrip Program – Deva Colucci
- Golf Tournament – Brian Penke
- Prairie Experience Chair – Sally Cook

Meet the VP's on the PTA Board!

VP Student Activities – Sarah Todd



Committees/Events that fall under VP Student Activities...

- Chess Club – Matt Ness
- Field Day – Kelli Fitzpatrick and Lucy Mayor
- Jr. Master Gardeners – Dav Bettenhausen
- Lego League – Amy Moore
- Math Club – Laura Moore (6th grade teacher)
- Panther Paw – Christopher Smith
- Garden – Dav Bettenhausen
- 6th Grade Leadership – Allison Hughes and Brenda Kotar
- Village People – Constance Eddy
- Variety Show – Meghan Black
- Musical – Caran Smith and Adrianna Moorehead

Meet the VP's on the PTA Board!

VP Communications – Maddie Kamphaus



Committees/Events that fall under VP Communications...

- Legislative Liaison – Melinda Lewis
- Prairie PTA Newsletter – Maddie Kamphaus
- PTA Website and Social Media – Beth Karczewski and Maddie Kamphaus
- 67th Street Signboard – Melanie Mendrys
- Windows/Display Cases – Beth Karczewski
- Yearbook – Vanessa Reese and Kelly Morgester
- Historian – Maddie Kamphaus

Meet the VP's on the PTA Board!

VP Community Building and Outreach – Nicole McCoy



Committees/Events that fall under VP Community Building and Outreach...

- Art in the Garden – Madison Loughlin and Carrie Kiefer
- Carnival – Amy Moore
- Roller Skating Parties – Jenny Bustos-Gomez
- Snowball Project – Meg Larson and Kate Robertson
- Movie Nights - TBD



BUDGET

Approval of the 2018-2019 PTA Budget

Standing Rules Approval

What are the Standing Rules?

- They are Prairie PTA specific rules that supplement the KS PTA Bylaws. These bylaws govern how we operate as a PTA.

What needs to be approved?

- A committee met over the summer to review and make recommended amendments to our Prairie PTA Standing Rules.
- Our PTA Executive Board voted to approve these amendments.
- Now... It's your turn to vote to approve these amendments!

Overview of amendments – Any Questions? Let's vote!



Nominating Committee for 2018-2019

It's time to vote in our Prairie PTA's 2018-2019
Nominating Committee...

Liz Beedle

Regan Barrett

Meg Kroening

Christopher Smith

Betsy Ordonez

Leah Taylor

Amy Morgan

Libby Pfeiffer

Sarah Walsh



WHY DO WE NEED FUNDRAISING?

After all, it's public education so isn't it funded by the state?

The answer is yes and no. SMSD receives budget dollars from the state based on number of students enrolled. The district then allots a portion of those dollars to each school for use. These funds are used for supplies, teacher materials, staff development, operating costs, etc.

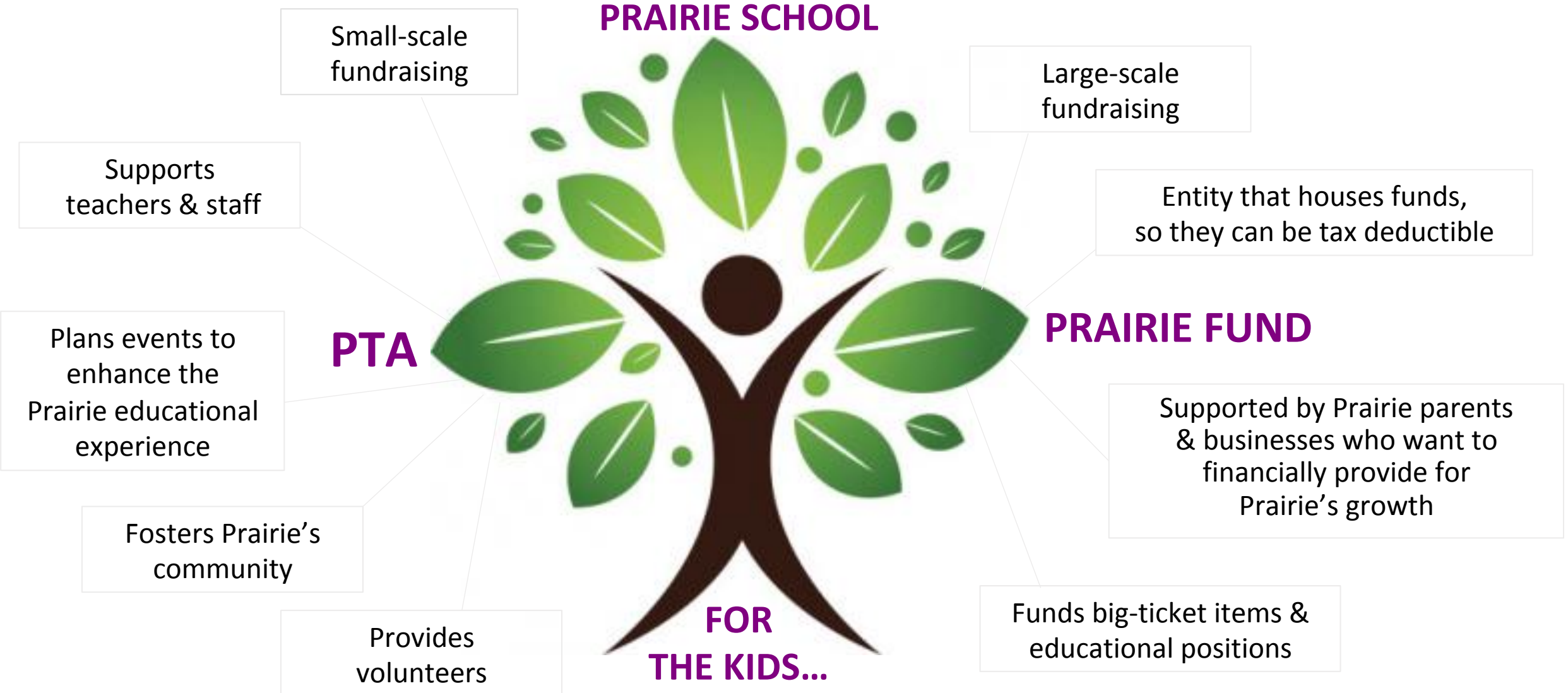
These funds only cover a portion of what Prairie needs to maintain current programming.

That means our fundraising efforts are responsible for making up the difference between what we need vs. what we get from the district.



PTA & Prairie Fund:

Working closely together to raise funds for Prairie



Prairie Fundraising:

By Organization

PTA

5K & Fun Run

Book Fair - Fall & Spring

Box Tops

Carnival

Father/Daughter Dance

Holiday Movie

Mother/Son Event

Pancake Breakfasts

Poinsettia Sale

PTA Membership Dues

School Supply Sale

Scripts - Winter & Spring

Spirit Dining Nights

Spirit Wear

Prairie Fund

Ads for Dads/New format coming

Auction

Class Parties

Global Sponsors

Best Gift Donations

Trash Bag Sales

Approximately \$33,000

Approximately \$120,000

Prairie Fundraising: Who Pays for What?

PTA Events & Programs

Clubs/Programs	Events	Educational Enhancements	Prairie Experience Fund
Chat n Chew	Art in the Garden	Art Displays/Lobby Windows	Kindergarten Experience
Junior Master Gardeners	Buddy Familial Picnic	Cultural Arts Assemblies	1st Grade Experience
Lego League/Jr. Lego League	Field Day	Prairie History / Composites	2nd Grade Experience
Mathletics	Ice Cream Social	Recess Equipment	3rd Grade KC Bus Tour / Box City
Panther Paw	Kindergarten Roundup	Supplemental Nurse Expenses	4th Grade ROAD
Student Council	Kleenex & Coffee	Educational Grants	5th Grade Science City
Watch Dog Dads	One Book, One School		5th/6th Grade Musical
Red Ribbon Week	Preschool Activities	Garden & Pond	6th Grade Wildwood/Graduation, etc.
Wellness Programs	Special Visitors Day		Website / Directory / PTA Insurance
	Variety Show	Staff Appreciation & Support	

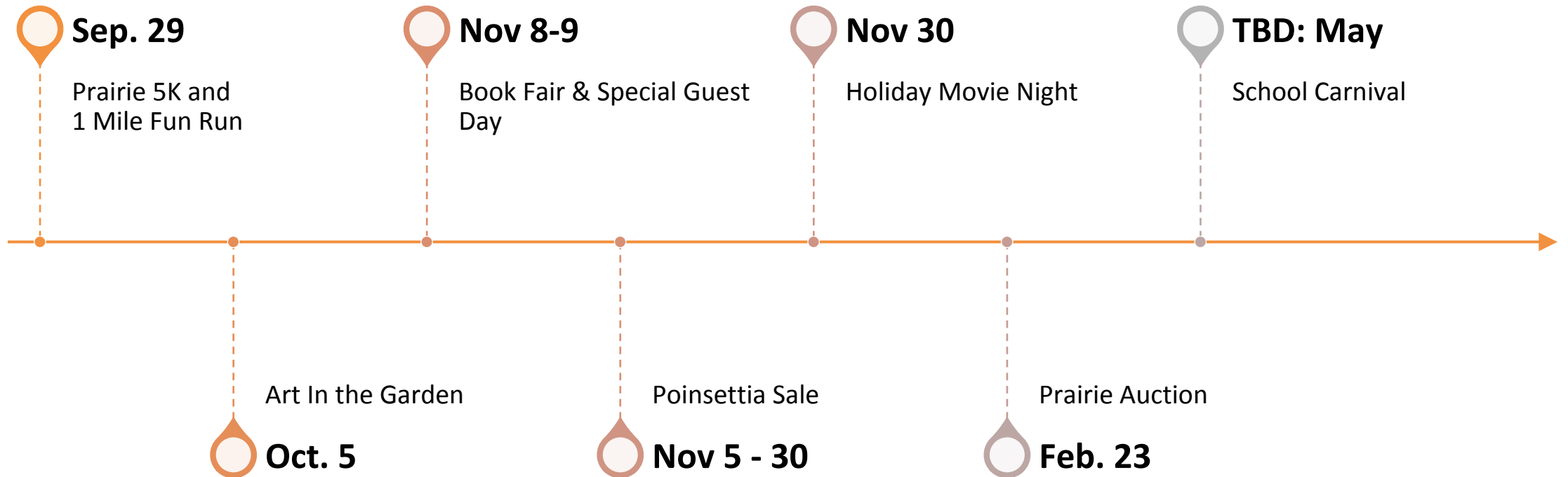
Prairie Fund Educational Positions & Programs

Counselor	Math Specialist	Supplemental Teacher Grants
Reading Specialist	Building Leadership Grants	Fills misc funding gaps

Building Leadership Team (BLT)

- 5 members of the team attended Professional Learning Communities (PLC) conference last year
 - District goal
 - Collaborating to meet student needs
 - Building-wide support systems for academic and social/emotional needs
- Members: Teacher from each grade level, support staff, specials staff, principal and instructional coach meet monthly
 - 2017-2018: planned activities with staff to create our mission, vision and collective commitments
- 2018-2019: Focus on goals developed by whole staff through the Kansas Education Systems Accreditation (KESA) process
 - Multi-tiered system of support: core curriculum, interventions & enrichment
 - BLT examines building data to determine professional development needs of staff
 - Teacher learning teams work together to plan standards-based lessons to meet the needs of all learners

Important Events:



Prairie's Going Global!

- School Theme:
Prairie's Going Global!
- The "Going Global" theme will be incorporated into classroom lessons, educational activities, assemblies and school events throughout the year.



One Prairie. One World.

PTA Reflections Competition

- National PTA Reflections program encourages students to explore and the arts in an educational way.
- PTAs across the country urge students to create and submit original works of art in the medium of their choice, reflecting on a specific theme.
- Theme: “Heroes Around Me”
- The six mediums that students can create work in for the contest are as follows:
 - Dance
 - Choreography
 - Film Production
 - Literature
 - Music Composition
 - Photography
 - Visual Arts.
 - Plus a special artist division to provide all students with the opportunity to participate.
- **GRADE DIVISIONS.**
 - Primary: Preschool-Grade 2; Intermediate: Grades 3-5; Middle School: Grades 6-8
 - Special Artist: All grades welcome
- Entries due to Prairie by 10/15/18
- More info: www.smac-pta.org/reflections





**PTA Legislative Liaison:
Melinda Lewis**

**Vote: November 6th
Spread the Word!**

**Look for legislative
liaison events with other
SME-area schools**

**Goal: To join forces to
attend legislative coffees/
forums, registering
voters at events, and
writing updates.**

A lush garden scene featuring a variety of flowers. In the foreground, there are several bright red, daisy-like flowers with dark brown centers. To the right, there are tall, slender purple flowers with small, clustered blossoms. The background shows a multi-story brick building with a white porch and a small dormer window. The overall scene is vibrant and colorful.

What is the SMSD Special Education PTA?
Prairie's own Mark Coleman is here to tell us!

A group of children are engaged in a garden activity. Some are standing, some are kneeling or sitting on the ground, and one is climbing a wire trellis structure. They are surrounded by green plants and soil. The scene is outdoors with trees and a fence in the background.

**THANK
YOU!!!**

This is YOUR PTA.

**It only works if we all work
together.
Thank you for your support
and participation.**